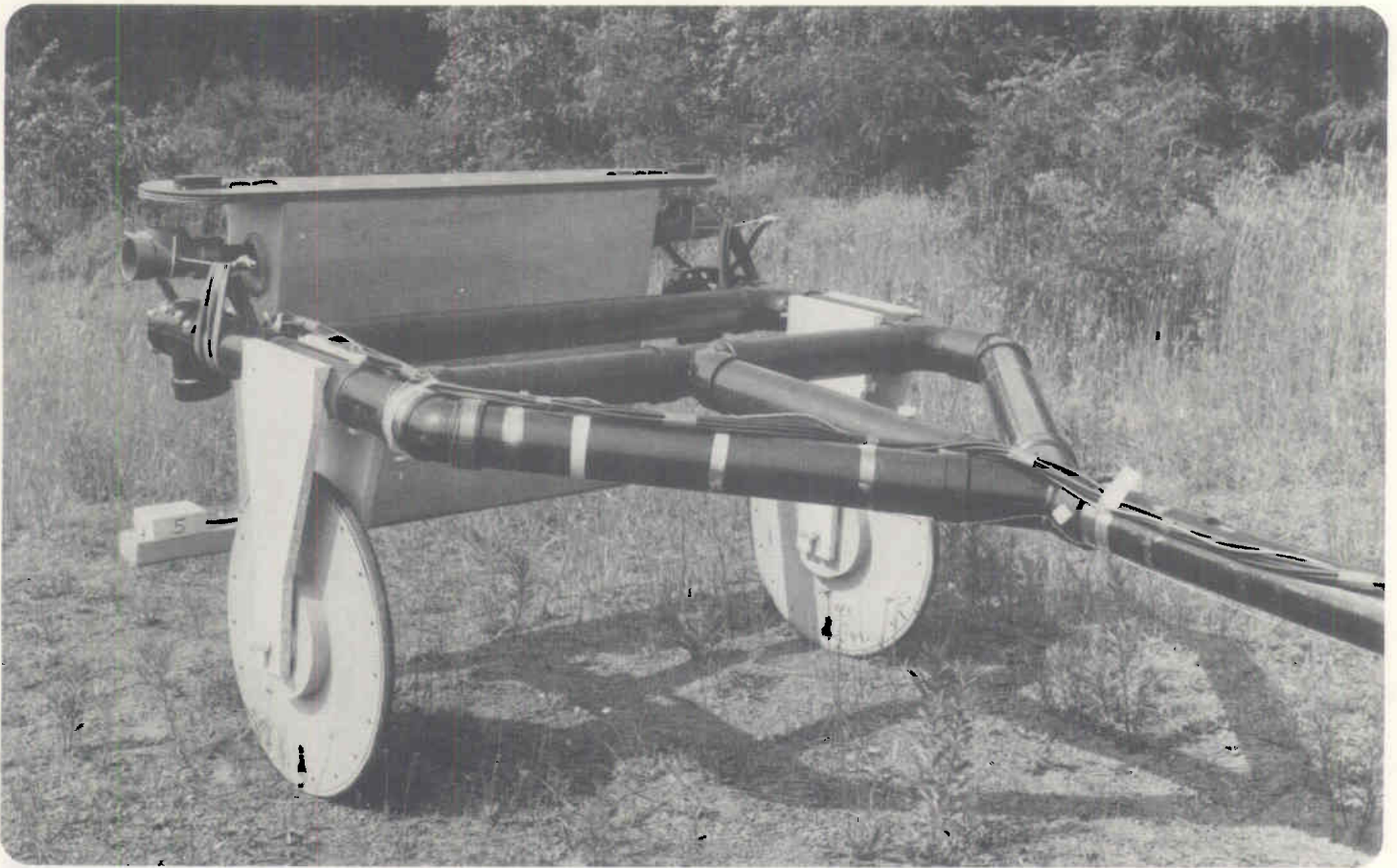


INSTRUMENTATION

GDD INC.

Introducing its deep boulder detector

The Prospecting Sulky



The Prospecting Sulky is a detector that reacts to conductive boulders or sulfide veins which often contain valuable minerals. The instrument is built like a helicopter-borne EM, except that the "boom" is carried vertically and that there are five or more receivers which individually detect the boulders under the non-conductive sulky.

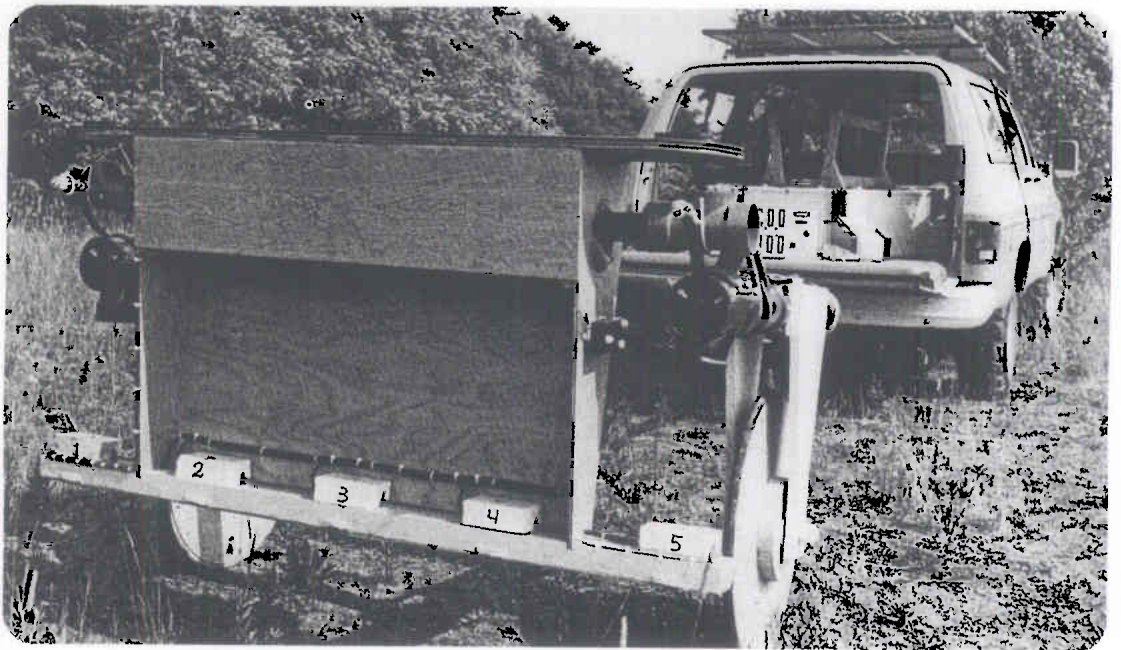
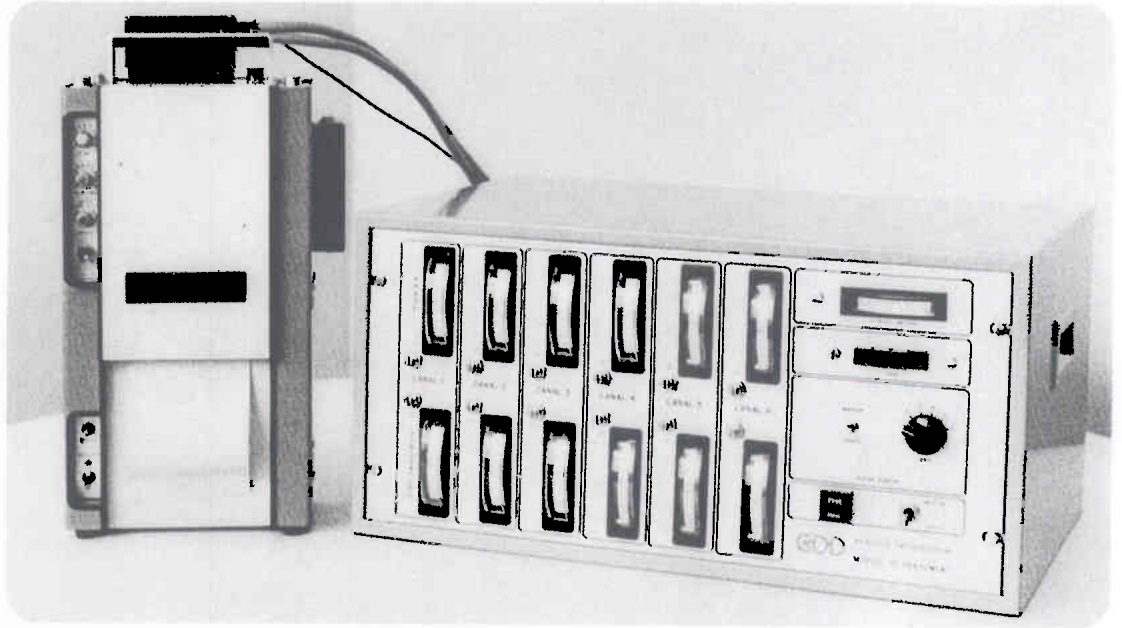
The output of each receiver is registered on a multi-channel recorder. Extra channels can be used to mount scintillometers to detect radioactive boulders. The Sulky can sweep an 8 foot width or more.

Advantages:

- Detects ore boulders
- Up to 10 Km/h on unimproved roads
- Instant verification of anomalies
- Best for preliminary reconnaissance of logging roads and lake shores
- High penetration — 8 feet or more for large boulders or veins

Specifications:

- Sensitive enough to detect a fist-sized piece of pyrrhotite near the surface
- Detects culverts (and large boulders) at 10 feet or more
- Weight 200 pounds
- Power 12V car battery
- Operating temperature -20°C to $+45^{\circ}\text{C}$
- Operating temperature/Recorder 0° to 45°C
- Can be dismantled and carried in a Suburban.



Patent pending